

CM202U

Battle-Proven Counter UAS System

IP67

<5.5 kg

MWIR

Man Portable

Protect your team, homeland, allies and national interests from unpredicted UAS strikes with the robust CM202U counter UAS system. The CM202U has 30x EO continuous optical zoom and 20x thermal optical zoom to enhance your operator's probability of detecting a UAS. With quicker detection capabilities, your operator has more time to respond to a hostile drone.



COUNTER UAS

Key Features

> MAN PORTABLE

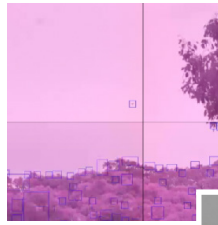
The CM202U weighs as little as 5500g to provide a lightweight and man-portable system that can be easily transported between locations.

> MAXIMUM DETECTION

30x daylight and 20x thermal continuous optical zoom provides accurate detection, recognition, identification, classification and tracking of a target.

> OPERATOR ASSIST

CUAS-OA utilises static and moving threat detection algorithms to reduce operator fatigue and workload, whilst maximising your probability of detecting a threat.



Technical Specifications

GIMBAL CAPABILITIES

Mechanical Axes	2 (Pan and Tilt)
Position Accuracy	0.0046° (80 µrad)
Elevation	+130° / -30°
Azimuth	360° Continuous
Slew Rate	150° / sec
Power	55W
Voltage	11 - 36V
Modes	Rate/ Scene/ Track/ GEO-Lock
Communication Link	Ethernet / RS232 Communication Libraries Available

HARDWARE

Weight	5500g
Diameter	203mm
Height	320mm
Temperature	-20°C to +55°C
Environment	IP67
MTBF	> 1000 hours
Shock Limit	20 G
Peripherals	3x GPIO

VIDEO SPECIFICATIONS

Digital Output	h.264 MPEG2 TS / (RTP) MPEG4 MPEG2 TS / (RTP)
Snapshots	1280x720 (EO) 640x512 (IR) Stored On Board
Standards	MISB (0102.10, 0601.7, 0603.2, 0604.3 & 0903.3) & STANAG (4609) Compliant

INTERNAL INS

Horizontal Position Accuracy	2.0m
Vertical Position Accuracy	3.0m
Heading Accuracy	0.8°
Accelerometer Range	Up to 16g
Supported Systems	GPS L1 / GLONASS L1 GALILEO E1 / BeiDou L1
Timing Accuracy	30ns

INTERNAL VIDEO PROCESSOR FEATURES

Recording on Board	✓
Encoding	✓
Object Tracking	✓
E-Stabilisation	✓
Scene Steering	✓

Configurations

DAYLIGHT (EO)

Type	CCD Global Shutter
Resolution	1280 x 720
FoV	62.9° to 2.2°
Zoom	30x Optical
Frame Rate	25Hz

THERMAL (IR)

Type	MWIR
Resolution	640x512
FoV	28.7° to 1.46°
Zoom	20x Optical
Frame Rate	Up to 30Hz